

Puppy Therapy

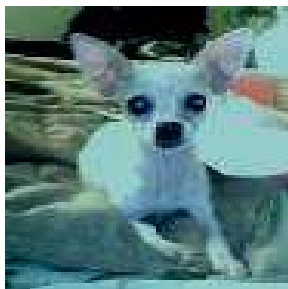
Offers:

- ❖ 3 – 4 Companion Puppies
- ❖ Trained Puppy Companions
- ❖ Barrels of love, hugs and laughs



Bailey

Tink



PATHWAY TO CHOICES **OUR MISSION**

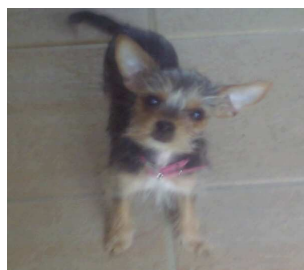
TO ASSIST INDIVIDUALS WITH DEVELOPMENTAL DISABILITIES AND TO ENABLE THEM TO CONTROL THEIR OWN INDIVIDUAL LIFESTYLES BY EMPOWERING THEM WITH THE NECESSARY RESOURCES IN ORDER FOR THEM TO ACHIEVE THEIR PERSONAL GOALS IN LIFE.



Chubbs



Boots



Sophie

Pathway to Choices

Adult Day Services



PUPPY THERAPY

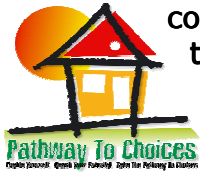


Contact Us:

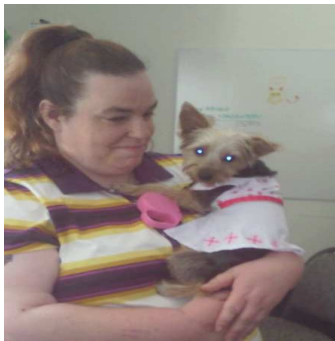
Juan Velasquez
510-724-9042 ext - 103

Shermeka Dixon – Associate Director
510-724-9042 ext-100

Pathway to Choices brings the community together through friendly, loveable companion puppies.



Featuring:



**M
a
m
a
z**

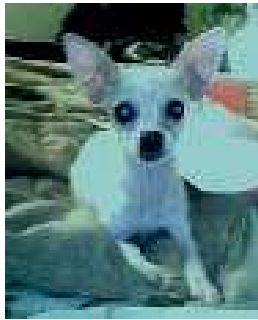
Mamaz is a Yorkie and Silky Terrier. She is 1½-year-old and she is going through intensive training to become a companion dog. The training consist of helping her sit, stay and come on command. Right now, she is learning to go to her bed on command. She loves being out in the community. Her owner, Amanda, rescued Mamaz from the dog pound. Mamaz loves people. Mamaz brings “the love” all time.

Silkie were bred to be lap dogs to Queens in Northern and a large part of Great Britain. In Great Britain, they celebrate Yorkshire Day, held on August 1. It's to celebrate the general cultures of Yorkies. Yorkies were developed in the 1800's they are a small bred dog. The distinguished feature of this bred are their silky blue and tan coats.

Present day Yorkies are a new fad for lots of celebs. They carry Yorkies around in special purses. One unique characteristic of a Yorkies is that they are great with children.

Tink

She is a 3-year-old teacup Chihuahua. She has had two litters of puppies, 3 the first and 4 the second. She was a wonderful mother and sees all her pups often.



Through [folklore](#) and [archeological](#) finds, there is evidence that the breed originated in Mexico. The most common theory is that

Chihuahuas are descended from the *Techichi*, a companion dog favored by the [Toltecs](#) and that the modern dog developed through breeding with miniaturized [Chinese](#) dogs brought to the Americas by the Spanish [Conquistadors](#).

Tink is a very quiet lap dog that is until she goes in the car or to the park. She then changes into a Rottweiler of some sort. She loves to let EVERYONE know she is there and barks, as her tail is wagging in fun. Chihuahuas usually live 10-15 years. Tink has adjusted to adults, children, and other animals.

**B
a
i
l
e
y**



He is a 8-year-old teacup Yorkie. The **Yorkshire terrier** is a small [dog breed](#). He is very quiet and wants to be loved. He has well adjusted to both people and animals. He follows his owner everywhere if allowed to and is so content just keeping someone company. He absolutely loves car rides and the idea of getting in and getting out at a new destination. I would recommend this breed to anyone.

Our Puppy Companions (Owners) are highly trained. They love dogs and enjoy supporting dogs in the community.

Tink



&

Chico